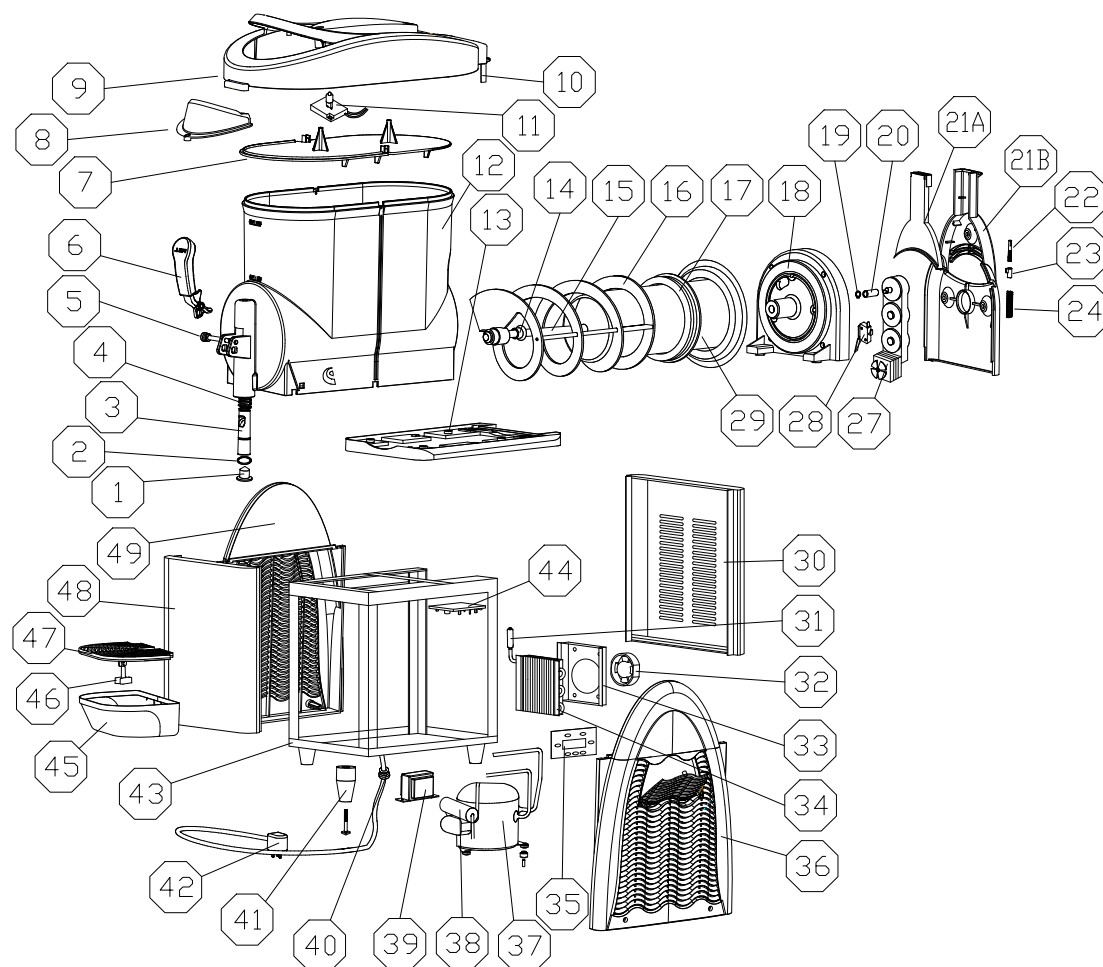


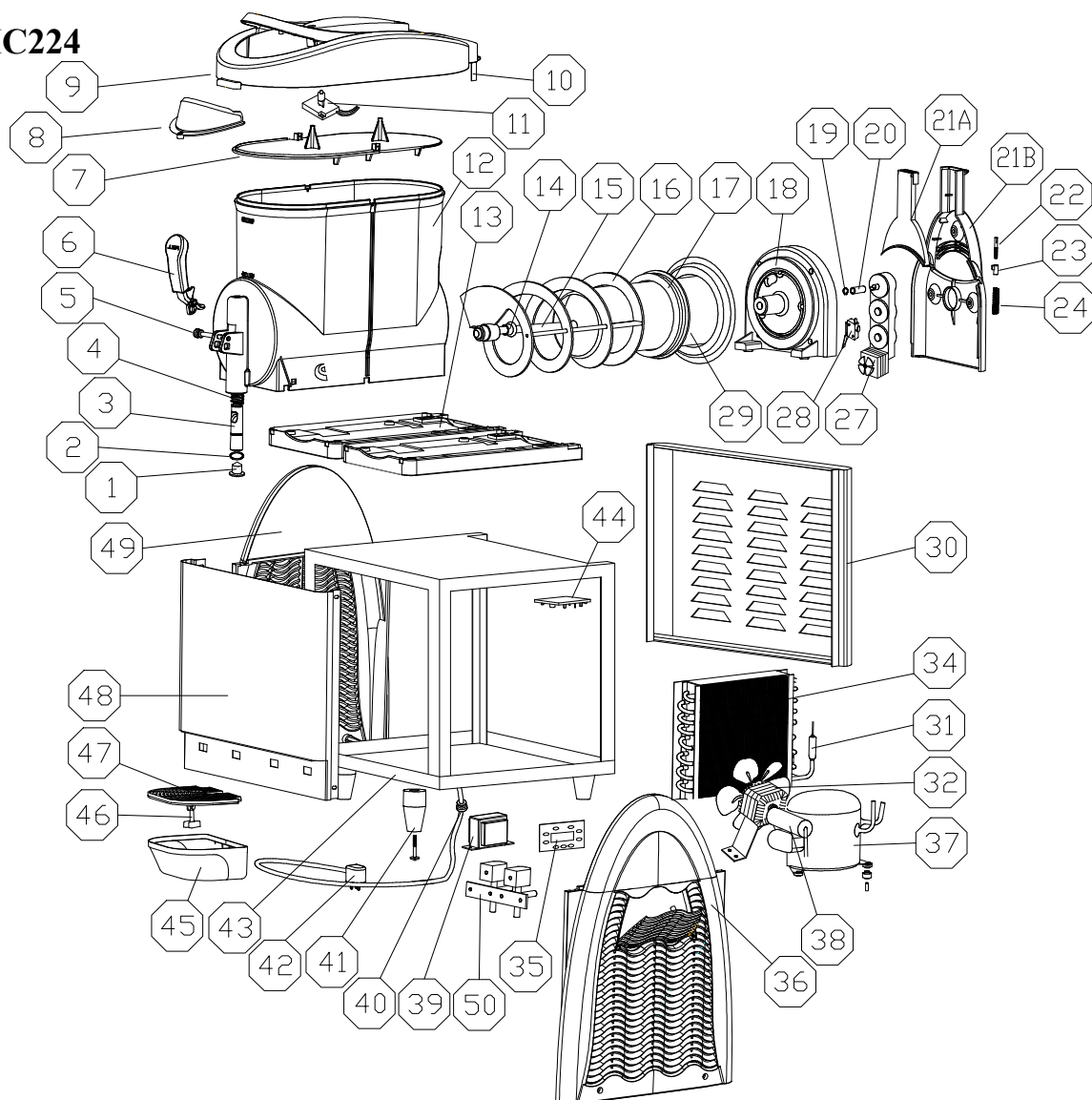
XHC112



No.	Part name	No.	Part name	No.	Part name
1	plug	18	seat of evaporator	37	compressor
2	O-ring	19	driving shaft baffle	38	compressor capacity
3	piston	20	connector	39	transformer
4	Discharging spring	21A	rear cover (front)	40	power cord clip
5	pin for handle	21B	rear cover (back)	41	supporting feet
6	handle	22	hardness screw	42	wire with plug
7	light box plate	23	hardness indicator	43	frame
8	transparent light box	24	harness spring	44	main ECU board
9	light box cover	27	gear motor	45	drip tray
10A	upper plug-in piece	28	micro-switch	46	buoy of drip tray
10B	lower plug-in piece	29	evaporator	47	drip tray cover
11	light	30	back panel	48	front panel
12	tank	31	filter	49	left panel

13	Plastic base for tank	32	fan motor	50	solenoid valve
14	scraper for spiral	33	casing for fan		
15	spindle for spiral	34	condenser		
16	beater	35	PCB board		
17	O-ring of tank	36	right panel		

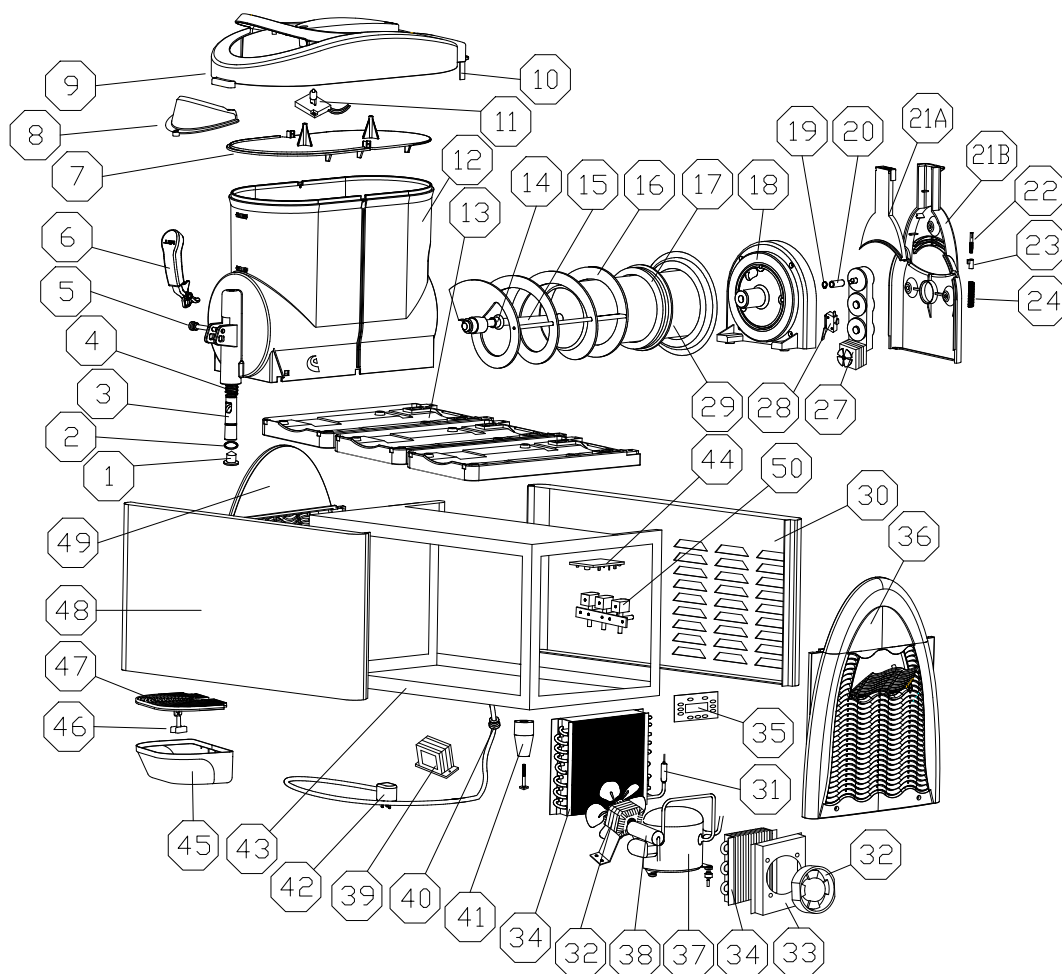
XHC224



No.	Part name	No.	Part name	No.	Part name
1	plug	18	seat of evaporator	37	compressor
2	O-ring	19	driving shaft baffle	38	compressor capacity
3	piston	20	connector	39	transformer
4	Discharging spring	21A	rear cover (front)	40	power cord clip
5	pin for handle	21B	rear cover (back)	41	supporting feet
6	handle	22	hardness screw	42	wire with plug
7	light box plate	23	hardness indicator	43	frame
8	transparent light box	24	harness spring	44	main ECU board
9	light box cover	27	gear motor	45	drip tray
10A	upper plug-in piece	28	micro-switch	46	buoy of drip tray
10B	lower plug-in piece	29	evaporator	47	drip tray cover

11	light	30	back panel	48	front panel
12	tank	31	filter	49	left panel
13	Plastic base for tank	32	fan motor	50	solenoid valve
14	scraper for spiral	33	casing for fan		
15	spindle for spiral	34	condenser		
16	beater	35	PCB board		
17	O-ring of tank	36	right panel		

XHC336



No.	Part name	No.	Part name	No.	Part name
1	plug	18	seat of evaporator	37	compressor
2	O-ring	19	driving shaft baffle	38	compressor capacity
3	piston	20	connector	39	transformer
4	Discharging spring	21A	rear cover (front)	40	power cord clip
5	pin for handle	21B	rear cover (back)	41	supporting feet
6	handle	22	hardness screw	42	wire with plug
7	light box plate	23	hardness indicator	43	frame
8	transparent light box	24	harness spring	44	main ECU board
9	light box cover	27	gear motor	45	drip tray
10A	upper plug-in piece	28	micro-switch	46	buoy of drip tray
10B	lower plug-in piece	29	evaporator	47	drip tray cover

11	light	30	back panel	48	front panel
12	tank	31	filter	49	left panel
13	Plastic base for tank	32	fan motor	50	solenoid valve
14	scraper for spiral	33	casing for fan		
15	spindle for spiral	34	condenser		
16	beater	35	PCB board		
17	O-ring of tank	36	right panel		